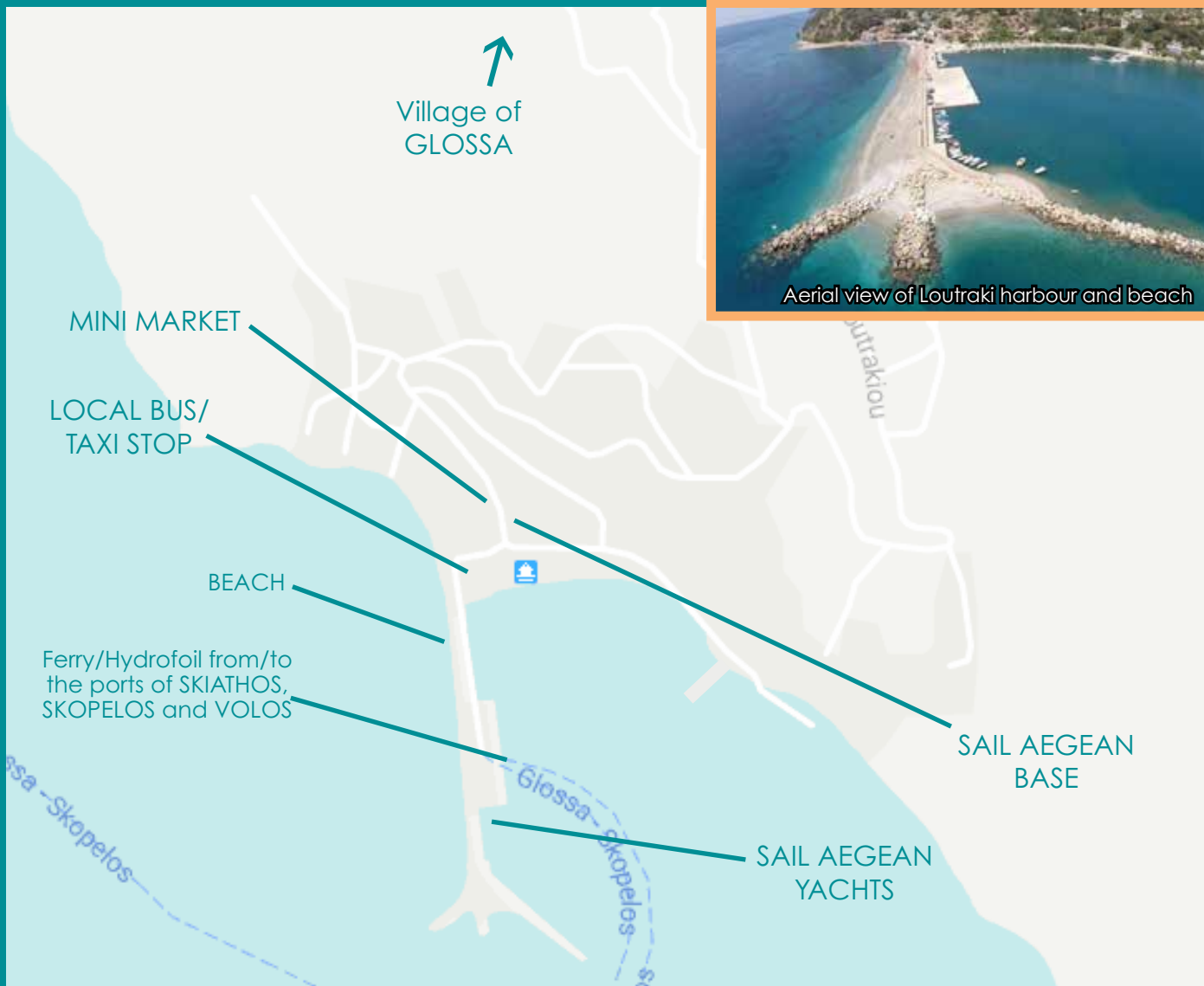




Aerial view of Loutraki harbour and beach



Sail Aegean

USEFUL INFORMATION FOR LOUTRAKI

Getting to Loutraki

From Skiathos Port, as well as from Volos Port, there are regular ferry and hydrofoil services (Hellenic Seaways, A.N.E.S Ferries, Blue Star Ferries and SeaJets). Duration from Skiathos is 20-30 minutes. Ferry/Hydrofoil tickets can be obtained on the spot at the ports of Skiathos, Skopelos Town, Loutraki or Volos, or online in advance, or via SAIL AEGEAN.

About Loutraki harbour

(also known as the harbour of the hilltop village of Glossa)

- Relaxed surroundings and quiet for a good night's rest
- Excellent fresh seafood restaurants
- Mini-market (open every day 08:00-21:00) and bakery
- Cafés
- Car rental
- Fresh water and electricity available for yachts
- Mixed pebble and sandy beach 2 minute's walk away, on the outer side of the harbour
This allows you to enjoy a nice swim, for example whilst waiting for a ferry or your check-in slot.
- Easy/quick access to Glossa
Glossa has great views of Skiathos, finer restaurants with Greek gourmet cuisine, some relaxing cocktail bars, and quaint alleyways. An ATM and pharmacy can also be found there.

Sail Aegean Loutraki Base
 Loutraki, 370 04 Skopelos, Greece.
 eMail: loutraki@sailaegean.eu

Operating Mid May - Early Oct.

Loutraki Base Manager
Tel: (+30) 6944148699

www.sailaegean.eu

Useful Telephone Numbers

- Police Emergency
Emergency 112
or Glossa Police (+30) 24240 33333
- Skopelos Health Centre
(+30) 24240 22222
- Loutraki Port Sub-Authority
(+30) 24240 33033
- Glossa/Loutraki Taxi
Stamatis (+30) 6988544272
Dimitrios (+30) 6978025718
Yannis (+30) 6944734024
Panagiotis (+30) 6979031303

LOUTRAKI CHECK-IN/OUT INFORMATION

Check-in: up to 17:00 - Check-out: 09:00

>> Please return to base by 17:00 on the day before check-out



Documents required at check-in:

- Booking Confirmation/Boarding Pass
- Passport or Identity Card for all crew
- Skipper Licence (if bareboat charter)
- Credit card with enough funds for the Security Deposit

Security Deposit/Damage Waiver Excess:

At check-in, you will be asked for an online authorisation of your credit card (AMEX, VISA or Mastercard) for your security deposit or excess amount. At check-out, if there has been no damage, Sail Aegean will instruct their bank to release the amount that is being held as a guarantee against your credit card. The bank involved will take about a week for this to be done. Insurance coverage for your security deposit and other risks can be obtained via PANTAENIUS or HAMBURGER.

Other things for you to know:

Charter Party: At check-in, you will be asked to sign the complete charter party, as legally required by the Greek Port Authorities.

Fuel Tank: You will receive the yacht with a full tank of fuel. At the end of your charter, a fuel van will refill the yacht's fuel tank at your check-out and you will be charged with the amount of fuel that you have used during your charter.

Yacht Inventory: A member of the Sail Aegean team will come aboard your yacht during your check-in to go through the inventory with you, so that you can satisfy yourself with the condition of the yacht and its equipment and make sure that everything is there as per the inventory checklist.

Items Included in Your Charter: Bed linen, bath and beach towels, pillows, light quilted blankets, full kitchen equipment, dinghy with oars, autopilot, GPS/plotter, one set of snorkelling gear, Greek water pilot, map/charts of the sailing region, full safety equipment.

Electricity Aboard: All yachts have 12V sockets and 150W inverters (suitable for charging smart-phones and tablets – not hairdryers!), except for the newer yacht models which have USB ports instead.

Music on the Yacht: All yachts have excellent sound systems with cockpit speakers. The sound systems include Radio and, depending on the yacht, some have CD players, bluetooth, USB and/or auxiliary connections (it is recommended you bring an iPod/iPhone/MP3Player auxiliary input cable and/or USB cable for connecting your music devices).

Provisions (Food Shopping): Sail Aegean can arrange delivery of your provisions to the yacht for a small charge, in addition to the cost of the provisions. You can download the provisioning list from our website (sailaegean.eu/infos/), complete it and return to portbase@sailaegean.eu. Alternatively, you can choose to do your own food shopping.

Transport from/to Skiathos and from/to Volos: Daily ferries/hydrofoils run between Skiathos and Loutraki harbour*, as well as from Volos: Hellenic Seaways, A.N.E.S Ferries, Blue Star Ferries and SeaJets. You may want to check ferry schedules and book your tickets on <http://travel.viva.gr/en/ferries>

*Loutraki harbour is also referred to as Glossa. Please look for Glossa when booking ferry tickets online.